

V-bank Filter in Plastic Frame KV-B Medium/ Sub-HEPA

Adaptive Efficiency: F5, F6, F7, F8, F9, H10, H11, H12



Product Features

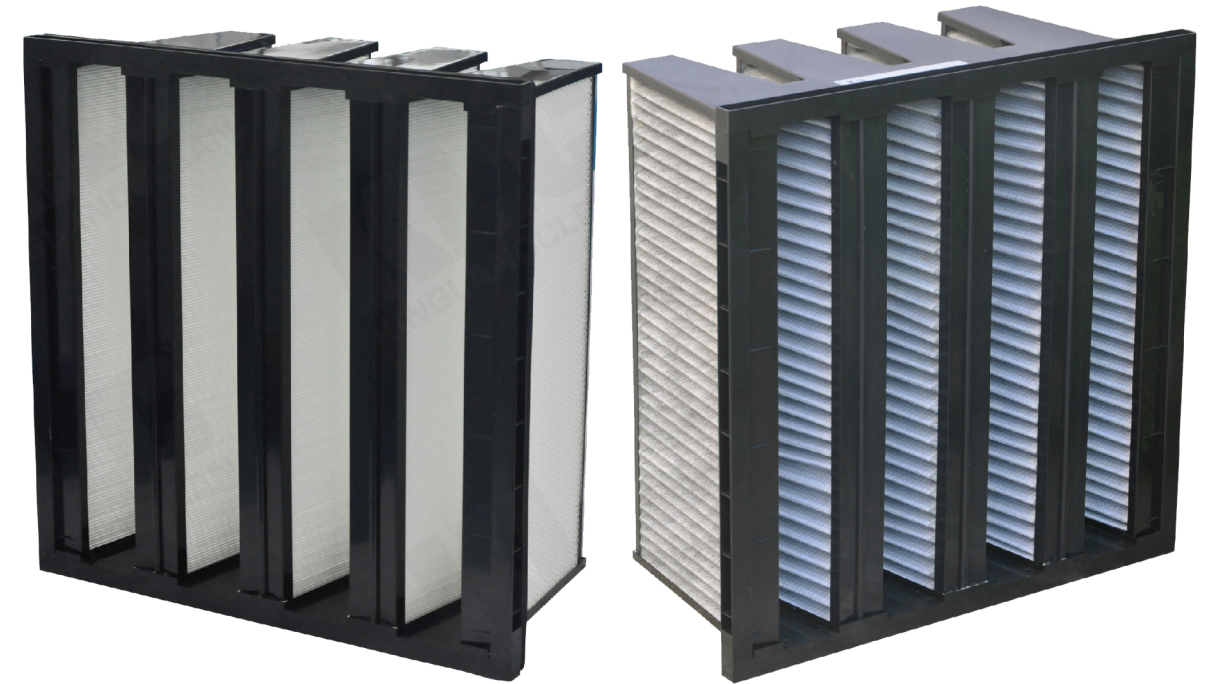
- 100% tested before delivery
- Able to sustain big air volume
- Special V type structure, reduce structural resistance
- Available with installation flange, more convenience to install
- Good sealing
- Big filtration area, air flow, high efficiency

Application

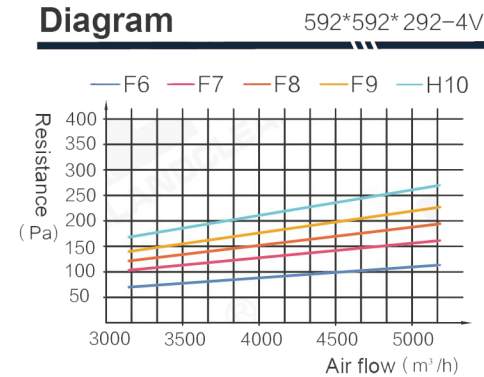
1. Aviation, electronic, semiconductor, wafer, biological pharmaceutical, hospital, food processing and other high clean class occasions.
2. Used as the front filtration level for HEPA filter

Material and Operation Conditions

Media	Micro glass fiber/ activated carbon granule/ PP
Frame	Plastic (ABS+PVC)
Sealant	PU polyurethane
Gasket	/ EVA / EPDM
Separator	Hot meld bead
Optional frame thickness	292 400
Max. Temperature	70 C
Max. Humidity	100%



Air Flow & Resistance Diagram



Technology Parameters

Model No.	Size(mm) (HxWxD)	Air flow/Initial resistance (m³/h)/(Pa)	Media area (m²)	Velocity (m/s)	Air flow/Initial resistance at different velocity (m³/h)/(Pa)			Efficiency (EN779)	Media (Pcs)
KV-B-001	287*287*292	750/75	4.58	2.53	600/60	750/75	900/90	F6	4
KV-B-002	490*287*292	1300/75	8.13	2.57	1050/60	1300/75	1550/90	F6	4
KV-B-003	592*287*292	1600/75	9.91	2.62	1300/60	1600/75	1900/90	F6	4
KV-B-004	287*490*292	1100/75	6.87	2.17	900/60	1100/75	1300/90	F6	6
KV-B-005	490*490*292	2000/75	12.20	2.31	1600/60	2000/75	2400/90	F6	6
KV-B-006	592*490*292	2400/75	14.87	2.30	1900/60	2400/75	2900/90	F6	6
KV-B-007	287*592*292	1650/75	9.16	2.70	1300/60	1650/75	2000/90	F6	8
KV-B-008	490*592*292	2650/75	16.26	2.68	2250/60	2800/75	3400/90	F6	8
KV-B-009	592*592*292	3400/75	19.83	2.69	2700/60	3400/75	4100/90	F6	8
KV-B-010	287*287*292	750/110	4.58	2.53	600/90	750/110	900/130	F7	4
KV-B-011	490*287*292	1300/110	8.13	2.57	1050/90	1300/110	1550/130	F7	4
KV-B-012	592*287*292	1600/110	9.91	2.62	1300/90	1600/110	1900/130	F7	4
KV-B-013	287*490*292	1100/110	6.87	2.17	900/90	1100/110	1300/130	F7	6
KV-B-014	490*490*292	2000/110	12.20	2.31	1600/90	2000/110	2400/130	F7	6
KV-B-015	592*490*292	2400/110	14.87	2.30	1900/90	2400/110	2900/130	F7	6
KV-B-016	287*592*292	1650/110	9.16	2.70	1300/90	1650/110	2000/130	F7	8
KV-B-017	490*592*292	2650/110	16.26	2.68	2250/90	2800/110	3400/130	F7	8
KV-B-018	592*592*292	3400/110	19.83	2.69	2700/90	3400/110	4100/130	F7	8

Model No.	Size(mm) (HxWxD)	Air flow/Initial resistance (m³/h)/(Pa)	Media area (m²)	Velocity (m/s)	Air flow/Initial resistance at different velocity (m³/h)/(Pa)			Efficiency (EN779)	Media (Pcs)
KV-B-019	287*287*292	750/130	4.58	2.53	600/105	750/130	900/155	F8	4
KV-B-020	490*287*292	1300/130	8.13	2.57	1050/105	1300/130	1550/155	F8	4
KV-B-021	592*287*292	1600/130	9.91	2.62	1300/105	1600/130	1900/155	F8	4
KV-B-022	287*490*292	1100/130	6.87	2.17	900/105	1100/130	1300/155	F8	6
KV-B-023	490*490*292	2000/130	12.20	2.31	1600/105	2000/130	2400/155	F8	6
KV-B-024	592*490*292	2400/130	14.87	2.30	1900/105	2400/130	2900/155	F8	6
KV-B-025	287*592*292	1650/130	9.16	2.70	1300/105	1650/130	2000/155	F8	8
KV-B-026	490*592*292	2650/130	16.26	2.68	2250/105	2800/130	3400/155	F8	8
KV-B-027	592*592*292	3400/130	19.83	2.69	2700/105	3400/130	4100/155	F8	8
KV-B-028	287*287*292	750/150	4.58	2.53	600/120	750/150	900/180	F9	4
KV-B-029	490*287*292	1300/150	8.13	2.57	1050/120	1300/150	1550/180	F9	4
KV-B-030	592*287*292	1600/150	9.91	2.62	1300/120	1600/150	1900/180	F9	4
KV-B-031	287*490*292	1100/150	6.87	2.17	900/120	1100/150	1300/180	F9	6
KV-B-032	490*490*292	2000/150	12.20	2.31	1600/120	2000/150	2400/180	F9	6
KV-B-033	592*490*292	2400/150	14.87	2.30	1900/120	2400/150	2900/180	F9	6
KV-B-034	287*592*292	1650/150	9.16	2.70	1300/120	1650/150	2000/180	F9	8
KV-B-035	490*592*292	2650/150	16.26	2.68	2250/120	2650/150	3400/180	F9	8
KV-B-036	592*592*292	3400/150	19.83	2.69	2700/120	3400/150	4100/180	F9	8
KV-B-037	287*287*292	750/180	4.58	2.53	600/145	750/180	900/215	H10	4
KV-B-038	490*287*292	1300/180	8.13	2.57	1050/145	1300/180	1550/215	H10	4
KV-B-039	592*287*292	1600/180	9.91	2.62	1300/145	1600/180	1900/215	H10	4
KV-B-040	287*490*292	1100/180	6.87	2.17	900/145	1100/180	1300/215	H10	6
KV-B-041	490*490*292	2000/180	12.20	2.31	1600/145	2000/180	2400/215	H10	6
KV-B-042	592*490*292	2400/180	14.87	2.30	1900/145	2400/180	2900/215	H10	6
KV-B-043	287*592*292	1650/180	9.16	2.70	1300/145	1650/180	2000/215	H10	8
KV-B-044	490*592*292	2650/180	16.26	2.68	2250/145	2650/180	3400/215	H10	8
KV-B-045	592*592*292	3400/180	19.83	2.69	2700/145	3400/180	4100/215	H10	8

1. Apart from the above standard sizes, customized size and efficiency are available. (F5, F6, F7, F8, F9, H10, H11, H12). 2. Deviation range for resistance is ±15%. 3. The above parameters are based on imported media.