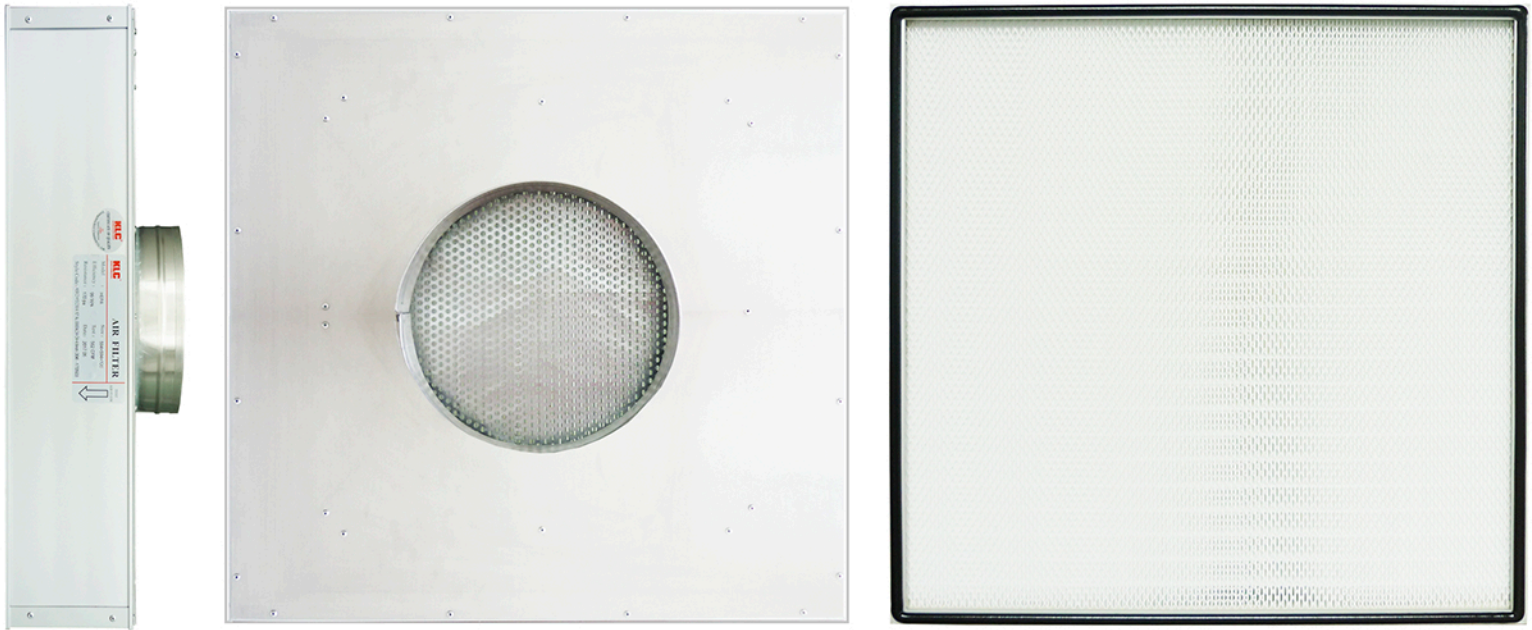


## HEPA Filter Terminal with Hood



## MATERIAL AND OPERATION CONDITIONS

**Media:** American HV Micro Glass Fiber

**Sealant:** PU two-component polyurethane rubber

**Cabinet:** Extruded and anodized aluminum / Galvanized steel

**Damper Size Inlet:** 10", optional 8"

**Cover Plate:** Aluminum

**Frame:** Extruded and anodized aluminum

**Separator:** Hot melt bead

**Gasket:** PU automatically foam endless gasket at air outlet side

**Face Guard:** Epoxy net at two sides

**Efficiency:** 99.99% ~ 99.9995% @ 0.3um

**Max. Temperature:** 70°C

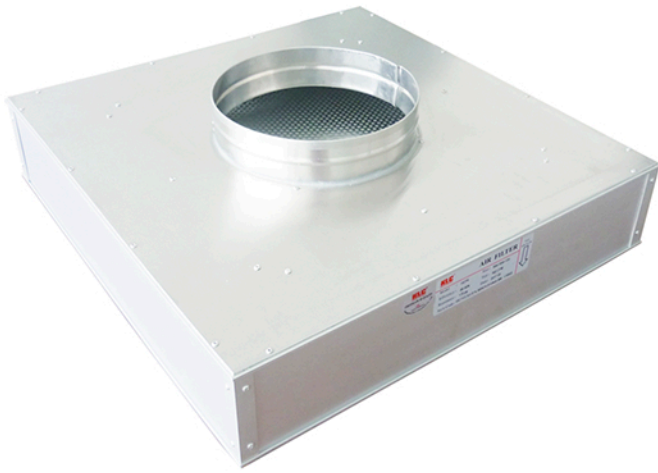
**Max. Humidity:** 100%

**Frame Thickness:** Extruded and anodized aluminum frame for 120 / 150 / 220

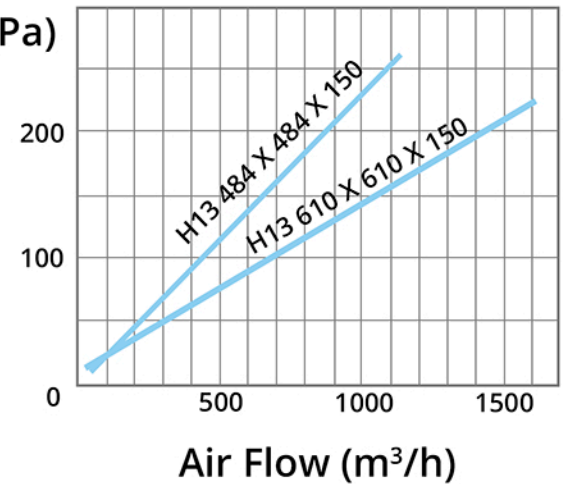
**High Efficiency - Strong and Durable**  
**100% Factory Inspection**



## HEPA Filter Terminal with Hood



Resistance (Pa)



## PRODUCT INFORMATION

### PRODUCT FEATURES

1. Use patent technology to ensure the full use of v-style passage;
2. Apply special seamless sealing technology; more durability and better sealing effects
3. American HV glass fiber, 100% humidity resistance, lower initial resistance, high final resistance.
4. Good appearance, convenient installation, easy maintenance, light weight, thin thickness

### APPLICATION

Surgery, lab, pharmacy, micro-electronic, fiber optic equipment, food processing etc. where industry have clean class requirements for working area.

### ADVANTAGES

Anti-aging technology, not changeful form, a low resistance and long life-span

## TECHNOLOGY PARAMETERS

Size (WxHxD) Inch	Size (WxHxD) mm	Air Flow		Ini. Resistance	Final Resistance (In. W.G)	Media Area (m²)	Dust Holding (g)
		(CFM)	(CMH)	(In. W.G)			
48 X 24 X 4.7	1203 X 594 X 120	1120	1901	0.68	1.6 - 2.41	21.2	1273
36 X 24 X 4.7	914 X 594 X 120	843	1431	0.68	1.6 - 2.41	15.9	959
24 X 24 X 4.7	594 X 594 X 120	562	954	0.68	1.6 - 2.41	10.7	644