

V - Bank HEPA Filter



MATERIAL AND OPERATION CONDITIONS

Media: American HV Micro Glass Fiber

Sealant: PU Two-component, polyurethane rubber

Frame: Extruded and anodized aluminum/Aluminum panel

Separator: Hot melt bead

Gasket: PU automatically foam endless gasket at two sides

Face Guard: Epoxy net at two sides

Efficiency: 99.99% ~ 99.995% @ 0.3um

Max. Temperature: 70°C

Max. Humidity: 100%

PRODUCT INFORMATION

PRODUCT FEATURES

1. It can catch the dust of 0.3um, the efficiency can reach 99.99%, the air flow can reach 2470 CFM
2. Use patent technology to ensure the full use of v-style passage
3. Apply special seamless sealing technology; more durability and better sealing effects
4. American HV micro glass fiber, 100% humidity resistance, lower initial resistance, high final resistance
5. Good appearance, convenient installation, easy maintenance, light weight, thin thickness
6. Available with header | Header's size is 20 x 25 mm

ADVANTAGES

Anti-aging technology, not changeful form, a low resistance and long life-span

High quality glass fiber, not only 100% humidity resistance, but also high dust holding capacity
KLC Unique channel-floded media packs, with combined holt-melt bead to stable the v-style passage,
makes the filter durable to big air flow Air pass through the air filter smoothly

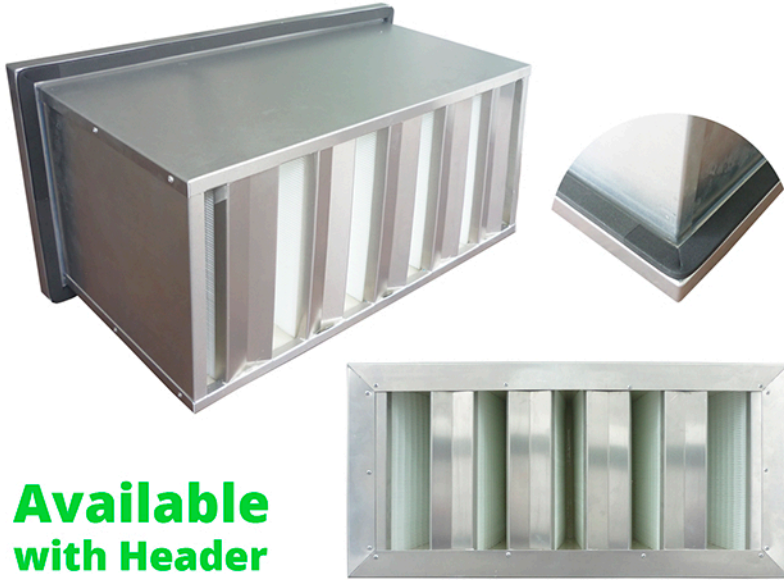
APPLICATION

Surgery, lab, pharmacy, micro-electronic, fiber optic equipment, food processing etc. where industry have clean class requirements for working area.

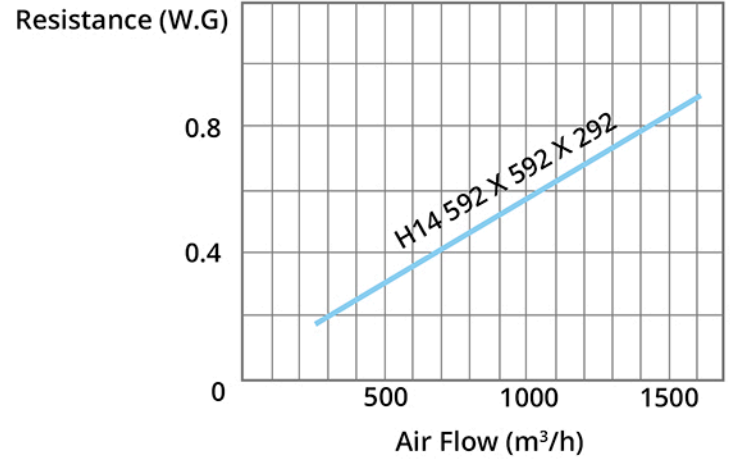
Gasket is in excellent tenacity, lengthen the life span of the filter, avoid the leakage due to the caducity of filter gasket



V - Bank HEPA Filter



**Available
with Header**



TECHNOLOGY PARAMETERS

(WxHxD) Inch*	(WxHxD) mm	Packs	Air Flow		Ini. Resistance	Final Resistance (In. W.G)	Media Area (m ²)	Dust Holding (g)
			(CFM)	(CMH)	(In. W.G)			
12 X 12 X 12	285 X 285 X 292	2	353	599	0.68	1.6 - 2.4	5.42	325
24 X 24 X 12	592 X 592 X 292	3	1041	1767	0.68	1.6 - 2.4	16.43	986
24 X 24 X 12	592 X 592 X 292	4	1412	2397	0.68	1.6 - 2.4	21.91	1315
24 X 24 X 12	594 X 594 X 298	5	2000	3396	0.68	1.6 - 2.4	27.83	1515
24 X 24 X 12	610 X 610 X 292	5	2037	3396	0.68	1.6 - 2.4	28.2	1692
36 X 24 X 12	915 X 610 X 292	6	2353	3929	0.68	1.6 - 2.4	33.84	2031
20 X 20 X 12	484 X 484 X 292	3	589	1000	0.68	1.6 - 2.4	13.51	811
24 X 12 X 12	610 X 305 X 292	5	1059	1798	0.68	1.6 - 2.4	14.44	866
12 X 24 X 12	305 X 610 X 292	3	1059	1798	0.68	1.6 - 2.4	16.92	1015
24 X 24 X 12	630 X 630 X 292	5	1824	3097	0.68	1.6 - 2.4	29.11	1746
24 X 24 X 12	600 X 600 X 292	5	1765	2996	0.68	1.6 - 2.4	27.75	1665
24 X 24 X 12	570 X 570 X 292	4	1353	2297	0.68	1.6 - 2.4	21.12	1267
12 X 12 X 12	320 X 320 X 292	3	588	998	0.68	1.6 - 2.4	9.07	544
24 X 24 X 12	515 X 515 X 292	4	1265	2147	0.68	1.6 - 2.4	19.13	1148
24 X 20 X 12	610 X 484 X 292	5	1265	2147	0.68	1.6 - 2.4	22.52	1351
20 X 24 X 12	490 X 592 X 292	4	1259	2137	0.68	1.6 - 2.4	21.91	1315
24 X 20 X 12	592 X 490 X 292	4	1147	1947	0.68	1.6 - 2.4	18.23	1094

* The inch size is approximate, the exact size is in millimeters